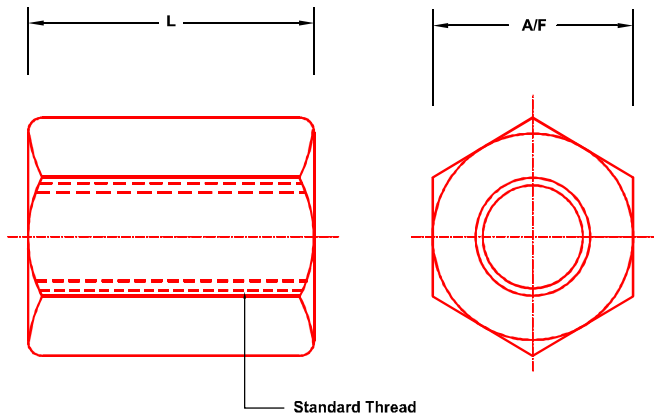


Steel / Brass Threaded Spacers



POWERMAT code	Dimension		
	Thread	L	A / F
<u>SPACER FOR M 2.5</u>			
PTS/M2.5/AF5/L3	M 2.5	3	5
PTS/M2.5/AF5/L4	M 2.5	4	5
PTS/M2.5/AF5/L5	M 2.5	5	5
PTS/M2.5/AF5/L6	M 2.5	6	5
PTS/M2.5/AF5/L7	M 2.5	7	5
PTS/M2.5/AF5/L8	M 2.5	8	5
PTS/M2.5/AF5/L9	M 2.5	9	5
PTS/M2.5/AF5/L10	M 2.5	10	5
PTS/M2.5/AF5/L11	M 2.5	11	5
PTS/M2.5/AF5/L12	M 2.5	12	5
PTS/M2.5/AF5/L13	M 2.5	13	5
PTS/M2.5/AF5/L14	M 2.5	14	5
PTS/M2.5/AF5/L15	M 2.5	15	5

SPACER FOR M 3

PTS/M3/AF5/L3	M 3	3	5
PTS/M3/AF5/L4	M 3	4	5
PTS/M3/AF5/L5	M 3	5	5
PTS/M3/AF5/L6	M 3	6	5
PTS/M3/AF5/L7	M 3	7	5
PTS/M3/AF5/L8	M 3	8	5
PTS/M3/AF5/L9	M 3	9	5
PTS/M3/AF5/L10	M 3	10	5
PTS/M3/AF5/L11	M 3	11	5
PTS/M3/AF5/L12	M 3	12	5
PTS/M3/AF5/L13	M 3	13	5
PTS/M3/AF5/L14	M 3	14	5
PTS/M3/AF5/L15	M 3	15	5

SPACER FOR M 4

PTS/M4/AF7/L3	M 4	3	7
PTS/M4/AF7/L4	M 4	4	7
PTS/M4/AF7/L5	M 4	5	7
PTS/M4/AF7/L6	M 4	6	7
PTS/M4/AF7/L7	M 4	7	7
PTS/M4/AF7/L8	M 4	8	7
PTS/M4/AF7/L9	M 4	9	7
PTS/M4/AF7/L10	M 4	10	7
PTS/M4/AF7/L11	M 4	11	7
PTS/M4/AF7/L12	M 4	12	7
PTS/M4/AF7/L13	M 4	13	7
PTS/M4/AF7/L14	M 4	14	7
PTS/M4/AF7/L15	M 4	15	7



- All Dimensions are in MM
- Material : Brass / Steel (Zinc Passivated) (Steel grade EN-1AL)

..... Global commitment

Standoff Pillar

POWERMAT code	Thread	Dimension		
		L	A/F	L 1
<u>SPACER FOR M2.5</u>				
PSP/M2.5/AF5/L18	M 2.5	18	5	8
PSP/M2.5/AF5/L20	M 2.5	20	5	8
PSP/M2.5/AF5/L25	M 2.5	25	5	8
PSP/M2.5/AF5/L30	M 2.5	30	5	10
PSP/M2.5/AF5/L35	M 2.5	35	5	10
PSP/M2.5/AF5/L40	M 2.5	40	5	10

SPACER FOR M3

PSP/M3/AF5/L22	M 3	22	5	8
PSP/M3/AF5/L25	M 3	25	5	8
PSP/M3/AF5/L30	M 3	30	5	10
PSP/M3/AF5/L35	M 3	35	5	10
PSP/M3/AF5/L40	M 3	40	5	10
PSP/M3/AF5/L45	M 3	45	5	10
PSP/M3/AF5/L50	M 3	50	5	10
PSP/M3/AF5/L55	M 3	55	5	10
PSP/M3/AF5/L60	M 3	60	5	10

SPACER FOR M4

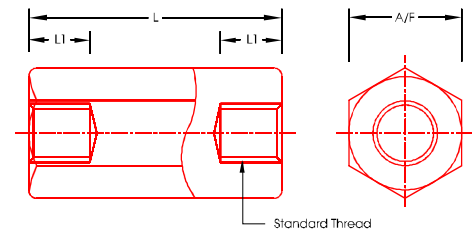
PSP/M4/AF7/L20	M 4	20	7	8
PSP/M4/AF7/L22	M 4	22	7	8
PSP/M4/AF7/L25	M 4	25	7	8
PSP/M4/AF7/L30	M 4	30	7	10
PSP/M4/AF7/L35	M 4	35	7	10
PSP/M4/AF7/L40	M 4	40	7	10
PSP/M4/AF7/L45	M 4	45	7	10
PSP/M4/AF7/L50	M 4	50	7	10
PSP/M4/AF7/L55	M 4	55	7	10
PSP/M4/AF7/L60	M 4	60	7	10
PSP/M4/AF7/L70	M 4	70	7	10
PSP/M4/AF7/L80	M 4	80	7	10

SPACER FOR M5

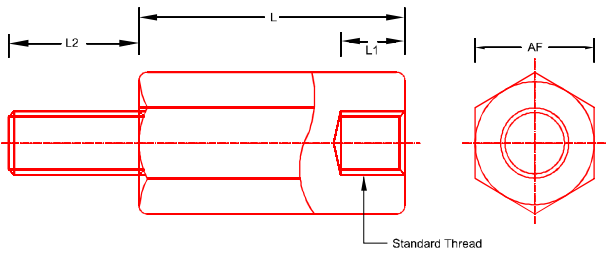
PSP/M5/AF8/L20	M 5	20	8	8
PSP/M5/AF8/L22	M 5	22	8	8
PSP/M5/AF8/L25	M 5	25	8	8
PSP/M5/AF8/L30	M 5	30	8	10
PSP/M5/AF8/L35	M 5	35	8	10
PSP/M5/AF8/L40	M 5	40	8	10
PSP/M5/AF8/L45	M 5	45	8	10
PSP/M5/AF8/L50	M 5	50	8	10
PSP/M5/AF8/L55	M 5	55	8	10
PSP/M5/AF8/L60	M 5	60	8	10
PSP/M5/AF8/L70	M 5	70	8	10
PSP/M5/AF8/L80	M 5	80	8	10

SPACER FOR M6

PSP/M6/AF10/L35	M 6	35	10	10
PSP/M6/AF10/L40	M 6	40	10	10
PSP/M6/AF10/L45	M 6	45	10	10
PSP/M6/AF10/L50	M 6	50	10	10
PSP/M6/AF10/L55	M 6	55	10	10
PSP/M6/AF10/L60	M 6	60	10	10
PSP/M6/AF10/L70	M 6	70	10	10
PSP/M6/AF10/L80	M 6	80	10	10



- All Dimensions are in MM
- Material : Brass / Steel (Zinc Passivated) (Steel grade EN-1AL)



POWERMAT code	Thread	Dimension			
		L	A/F	L 1	L 2
SPACER FOR M2.5					
PMFP/M2.5/AF5/L10	M 2.5	10	5	6	6
PMFP/M2.5/AF5/L12	M 2.5	12	5	6	6
PMFP/M2.5/AF5/L15	M 2.5	15	5	6	6
PMFP/M2.5/AF5/L18	M 2.5	18	5	6	6
PMFP/M2.5/AF5/L20	M 2.5	20	5	6	6
PMFP/M2.5/AF5/L25	M 2.5	25	5	6	6
PMFP/M2.5/AF5/L30	M 2.5	30	5	6	6
PMFP/M2.5/AF5/L35	M 2.5	35	5	6	6
PMFP/M2.5/AF5/L40	M 2.5	40	5	6	6

SPACER FOR M3

PMFP/M3/AF5/L10	M 3	10	5	8	6
PMFP/M3/AF5/L12	M 3	12	5	8	8
PMFP/M3/AF5/L15	M 3	15	5	10	8
PMFP/M3/AF5/L18	M 3	18	5	10	8
PMFP/M3/AF5/L20	M 3	20	5	10	8
PMFP/M3/AF5/L25	M 3	25	5	10	10
PMFP/M3/AF5/L30	M 3	30	5	10	10
PMFP/M3/AF5/L35	M 3	35	5	10	10
PMFP/M3/AF5/L40	M 3	40	5	10	10
PMFP/M3/AF5/L45	M 3	45	5	10	10
PMFP/M3/AF5/L50	M 3	50	5	10	10
PMFP/M3/AF5/L55	M 3	55	5	10	10
PMFP/M3/AF5/L60	M 3	60	5	10	10

SPACER FOR M4

PMFP/M4/AF7/L10	M 4	10	7	8	6
PMFP/M4/AF7/L12	M 4	12	7	8	8
PMFP/M4/AF7/L15	M 4	15	7	10	8
PMFP/M4/AF7/L18	M 4	18	7	10	8
PMFP/M4/AF7/L20	M 4	20	7	10	8
PMFP/M4/AF7/L25	M 4	25	7	10	10
PMFP/M4/AF7/L30	M 4	30	7	10	10
PMFP/M4/AF7/L35	M 4	35	7	10	10
PMFP/M4/AF7/L40	M 4	40	7	10	10
PMFP/M4/AF7/L45	M 4	45	7	10	10
PMFP/M4/AF7/L50	M 4	50	7	10	10
PMFP/M4/AF7/L55	M 4	55	7	10	10
PMFP/M4/AF7/L60	M 4	60	7	10	10

POWERMAT code	Thread	Dimension			
		L	A/F	L 1	L 2
SPACER FOR M5					
PMFP/M5/AF8/L10	M 5	10	8	8	8
PMFP/M5/AF8/L12	M 5	12	8	8	8
PMFP/M5/AF8/L15	M 5	15	8	10	8
PMFP/M5/AF8/L18	M 5	18	8	10	8
PMFP/M5/AF8/L20	M 5	20	8	10	8
PMFP/M5/AF8/L25	M 5	25	8	10	10
PMFP/M5/AF8/L30	M 5	30	8	10	10
PMFP/M5/AF8/L35	M 5	35	8	10	10
PMFP/M5/AF8/L40	M 5	40	8	10	10
PMFP/M5/AF8/L45	M 5	45	8	10	10
PMFP/M5/AF8/L50	M 5	50	8	10	10
PMFP/M5/AF8/L55	M 5	55	8	10	10
PMFP/M5/AF8/L60	M 5	60	8	10	10
PMFP/M5/AF8/L70	M 5	70	8	10	10
PMFP/M5/AF8/L80	M 5	80	8	10	10

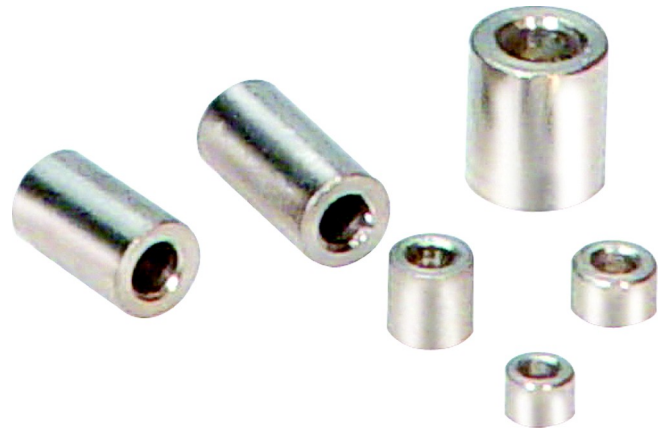
SPACER FOR M6

PMFP/M6/AF10/L10	M 6	10	10	8	10
PMFP/M6/AF10/L12	M 6	12	10	8	10
PMFP/M6/AF10/L15	M 6	15	10	10	10
PMFP/M6/AF10/L18	M 6	18	10	10	10
PMFP/M6/AF10/L20	M 6	20	10	10	10
PMFP/M6/AF10/L25	M 6	25	10	10	10
PMFP/M6/AF10/L30	M 6	30	10	10	10
PMFP/M6/AF10/L35	M 6	35	10	10	10
PMFP/M6/AF10/L40	M 6	40	10	10	10
PMFP/M6/AF10/L45	M 6	45	10	10	10
PMFP/M6/AF10/L50	M 6	50	10	10	10
PMFP/M6/AF10/L55	M 6	55	10	10	10
PMFP/M6/AF10/L60	M 6	60	10	10	10
PMFP/M6/AF10/L70	M 6	70	10	10	10
PMFP/M6/AF10/L80	M 6	80	10	10	10
PMFP/M6/AF10/L100	M 6	100	10	10	10

• All Dimensions are in MM
 • Material : Brass / Steel (Zinc Passivated) (Steel grade EN-1AL)

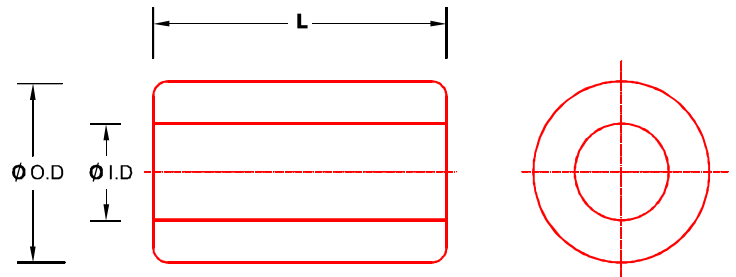
Steel / Brass Spacers

POWERMAT code	Dimension		
	L	O.D	I.D
<u>SPACER FOR M2</u>			
PCS/04/122/L3	3	4	2.2
PCS/04/122/L4	4	4	2.2
PCS/04/122/L5	5	4	2.2
PCS/04/122/L6	6	4	2.2
PCS/04/122/L7	7	4	2.2
PCS/04/122/L8	8	4	2.2
PCS/04/122/L9	9	4	2.2
PCS/04/122/L10	10	4	2.2
PCS/04/122/L11	11	4	2.2
PCS/04/122/L12	12	4	2.2
PCS/04/122/L13	13	4	2.2
PCS/04/122/L14	14	4	2.2
PCS/04/122/L15	15	4	2.2
PCS/04/122/L18	18	4	2.2
PCS/04/122/L20	20	4	2.2
PCS/04/122/L25	25	4	2.2
PCS/04/122/L30	30	4	2.2



SPACER FOR M2.5

PCS/05/127/L3	3	5	2.7
PCS/05/127/L4	4	5	2.7
PCS/05/127/L5	5	5	2.7
PCS/05/127/L6	6	5	2.7
PCS/05/127/L7	7	5	2.7
PCS/05/127/L8	8	5	2.7
PCS/05/127/L9	9	5	2.7
PCS/05/127/L10	10	5	2.7
PCS/05/127/L11	11	5	2.7
PCS/05/127/L12	12	5	2.7
PCS/05/127/L13	13	5	2.7
PCS/05/127/L14	14	5	2.7
PCS/05/127/L15	15	5	2.7
PCS/05/127/L18	18	5	2.7
PCS/05/127/L20	20	5	2.7
PCS/05/127/L25	25	5	2.7
PCS/05/127/L30	30	5	2.7



SPACER FOR M3

PCS/06/132/L3	3	6	3.2
PCS/06/132/L4	4	6	3.2
PCS/06/132/L5	5	6	3.2
PCS/06/132/L6	6	6	3.2
PCS/06/132/L7	7	6	3.2
PCS/06/132/L8	8	6	3.2
PCS/06/132/L9	9	6	3.2
PCS/06/132/L10	10	6	3.2
PCS/06/132/L11	11	6	3.2
PCS/06/132/L12	12	6	3.2
PCS/06/132/L13	13	6	3.2
PCS/06/132/L14	14	6	3.2
PCS/06/132/L15	15	6	3.2
PCS/06/132/L18	18	6	3.2
PCS/06/132/L20	20	6	3.2
PCS/06/132/L25	25	6	3.2
PCS/06/132/L30	30	6	3.2

POWERMAT code	Dimension		
	L	O.D	I.D
<u>SPACER FOR M4</u>			
PCS/08/142/L3	3	8	4.2
PCS/08/142/L4	4	8	4.2
PCS/08/142/L5	5	8	4.2
PCS/08/142/L6	6	8	4.2
PCS/08/142/L7	7	8	4.2
PCS/08/142/L8	8	8	4.2
PCS/08/142/L9	9	8	4.2
PCS/08/142/L10	10	8	4.2
PCS/08/142/L11	11	8	4.2
PCS/08/142/L12	12	8	4.2
PCS/08/142/L13	13	8	4.2
PCS/08/142/L14	14	8	4.2
PCS/08/142/L15	15	8	4.2
PCS/08/142/L18	18	8	4.2
PCS/08/142/L20	20	8	4.2
PCS/08/142/L25	25	8	4.2
PCS/08/142/L30	30	8	4.2

- All Dimensions are in MM
- Material : Brass / Steel (Zinc Passivated) (Steel grade EN-1AL)