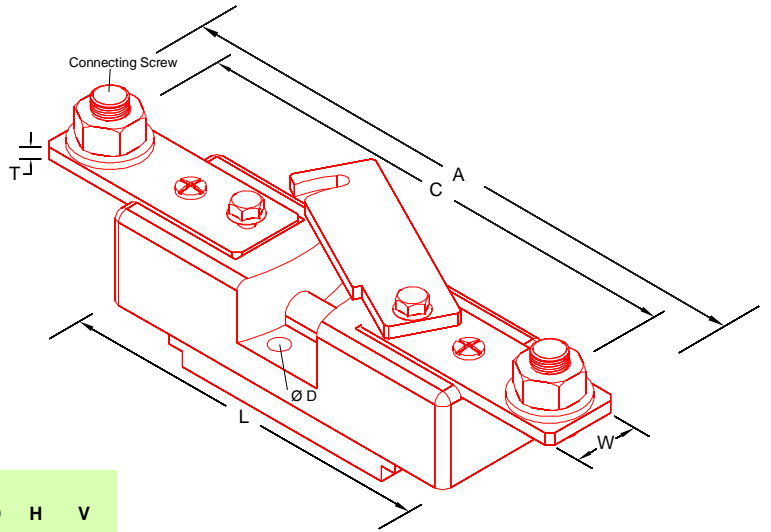
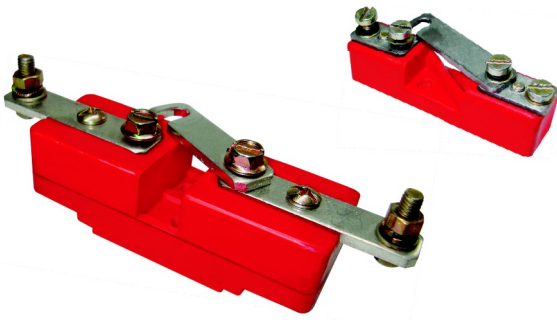
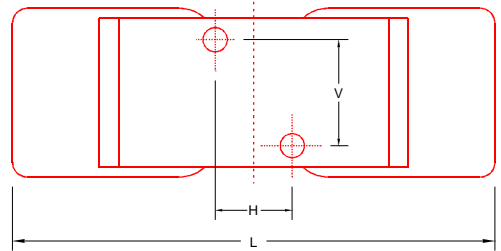


## Neutral Link

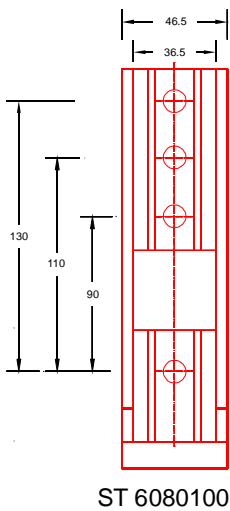
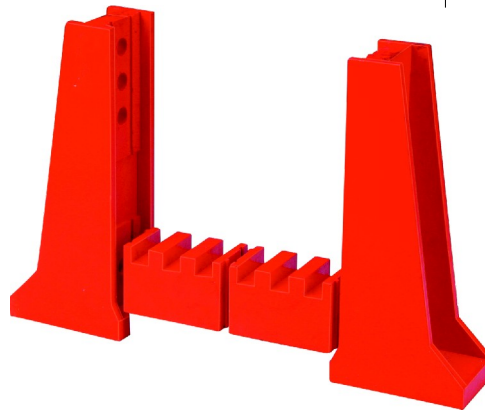


POWERMAT code	A	C	W	L	T	C.Screw	Ø D	H	V
DTNL 32 Amp	65	57	10	65	2	M 4	5	10.8	6
DTNL 63 Amp	78	67	12	78	2.5	M 5	5	11	10
DTNL 125 Amp	128	114	16	100	3	M 6	5.5	6	20
DTNL 200 Amp	160	138	20	100	3	M 8	5.5	6	20
DTNL 400 Amp	200	174	25	125	5	M 10	5.5	26	25
DTNL 600 Amp	240	210	38	140	6	M 10	6	24	24

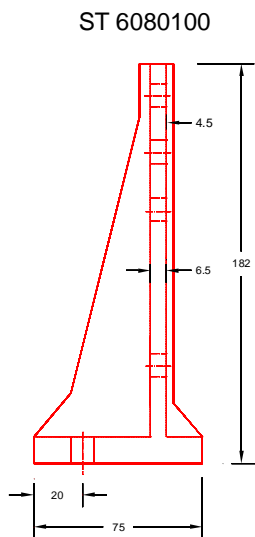


Mounting Dimensions of DTNL Series

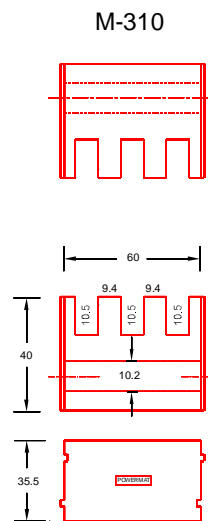
## Modular Support



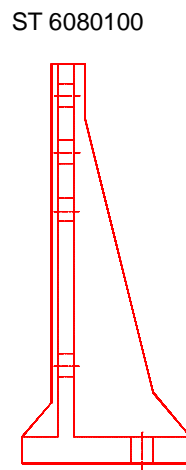
ST 6080100



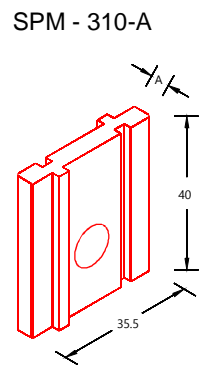
ST 6080100



M-310



ST 6080100



SPM - 310-A

POWERMAT code	A
SPM - 310 - 05	5
SPM - 310 - 10	10
SPM - 310 - 15	15

- Material : DMC (Dough Moulding Compound) UL File No. QEUJ2.E249670 (Halogen Free)
- Insert : Brass / Steel (Zinc Passivated)
- Insert Material detail on page no. 66
- Mounting Detail on Page No. 67
- All Insulators are certified

- For technical details of Busbar support & Insulator, please refer POWERMAT TECHNICAL NOTES - 01/15.
- For checking the suitability of a support & insulator for a fault current, please ask for POWERMAT FAULT LEVEL CALCULATOR Software.